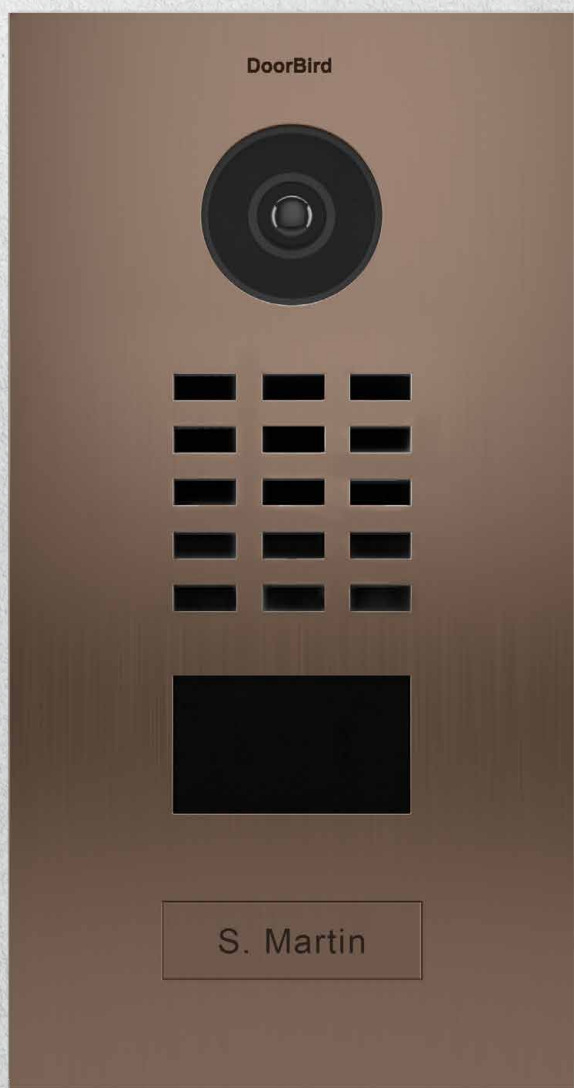




DoorBird
Technology meets Design.



D2101BV

IP VIDEO DOOR STATION

Brushed Stainless Steel • Bronze-Finish • 1 Call button

Designed,
developed and
made in Germany

ANSWER YOUR DOOR ANYWHERE.



HOW DOES IT WORK

Imagine, you are not at home and your children have locked themselves out or the courier delivers a package. With DoorBird this is no longer a problem. Each time someone rings the doorbell you get a push notification on your smartphone or tablet. You can then not only talk to the visitor but also see him in HD quality. You will never miss a visitor again. With DoorBird you are on the go and still at home, even if a burglar presses the doorbell to check if someone is at home.

SMART HOME STARTS AT THE FRONT DOOR

DoorBird is the smart solution for your door entrance. The IP Video Door Station can be used as a stand-alone unit or can be integrated into an existing Smart-Home platform. Even existing classic installations such as a door chime or an electric door and gate opener can still be used and controlled via the App.

QUALITY MADE IN GERMANY

DoorBird is designed, developed and produced in Berlin, Germany. DoorBird's "Made in Germany" is not only a motto but a philosophy. All DoorBird IP Video Door Stations are manufactured and tested in Berlin to guarantee the highest quality, longevity and customer satisfaction.

ADVANTAGES



Open API

Local interface for the integration with third-party systems and SIP



Video and audio call

On smartphones and tablets (iOS, Android) or landline phones (SIP)



Smart Home & ONVIF compatible

Control4, Loxone, Crestron, Synology, QNAP, AVM FRITZ!fon, URC, RTI, ELAN, Fibaro, Bang & Olufsen and others



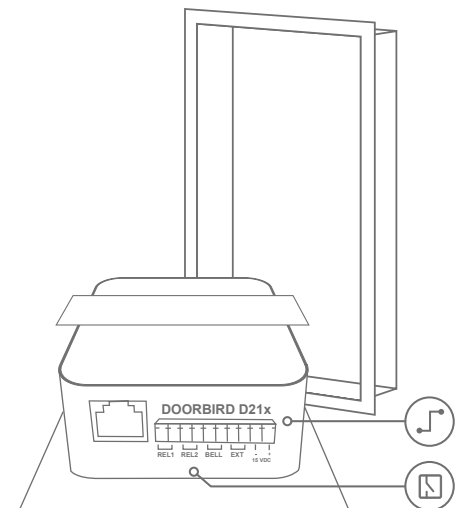
Individual time and action plans, e.g.:

RFID card „abc“ has only admission on Wednesday from 9 am until 11 am

4D motion sensor switches on external lamp between 9 pm and 6 am



DoorBird
Technology meets Design.



Automatic door opener

For use in medical offices and office environments



Free cloud recording

Can be optionally activated for visitor history



Geofencing

Automatic door and gate opening when returning home



Receive packages at any time

Direct the parcel carrier e.g. to the neighbor or open the garage door via smartphone



Burglary prevention

Prevents more break-ins than an alarm system



Night vision

With 12 IR LEDs



Light sensor

For night vision mode



Motion sensor with 4D technology

Distance up to 10 m adjustable via App (interval: 1 m)



Elegant and discreet design

No visible screws on the front panel

Plain and high-quality surface



Easy connection to the network

Connection via RJ45 socket or bell wire via 2-wire transformer (PoE, network data)



HDTV Video

Ultra-wide-angle, hemispheric lens, 180°



Echo and noise suppression (AEC, ANR)



RFID card reader

Configurable remotely via App (e. g. time frame)



Call button

With backlit nameplate



Two freely configurable bi-stable switching relays

Two doors or gates can be controlled via App

Status configurable via App: Temporary or permanent circuit

TECHNICAL SPECIFICATIONS



DoorBird
Technology meets Design.

GENERAL

Front panel	Brushed stainless steel, Bronze-Finish, 3 mm (0.12 in)
Mounting housing (backbox)	Stainless steel
Mounting type	Flush-mounted, surface-mounting housing sold separately
Call button	Plastic. Engraveable metal cover plate sold separately, see www.doorbird.com/buy
Nameplate	Illuminated
Power supply	15 V DC or Power over Ethernet (PoE 802.3af Mode-A)
Weight	1577 g
Connectors	<ul style="list-style-type: none"> • RJ45, for LAN/PoE • Bi-stable latching relay #1, max. 1-24 V DC/V AC, 1 Ampere, e.g. for electric door opener • Bi-stable latching relay #2, max. 1-24 V DC/V AC, 1 Ampere, e.g. for electric door opener • Switch relays, max. 1-24 V DC / V AC*, 1 ampere, e.g. for conventional door chimes • External input for external door opener button (potential-free) • 15 V DC input (+, -)
Weather-proof	Yes, IP65
Approvals	CE, IC, FCC, RoHS, IP65, IK08
Dimensions	253 x 131 x 48.75 mm (H x W x D) 9.96 x 5.16 x 1.92 in (H x W x D)
Operating conditions	-25 to +55°C / -13 to 131°F Humidity 10 to 85 % RH (non condensing)
Scope of delivery	1 x Main Electrical Unit 1 x Front panel 1 x Mounting housing (backbox) 1 x Power supply unit (mains adaptor) with four country-specific adaptors (110 - 240 V AC to 15 V DC) 1 x RFID key fob 1x Screwdriver 1x Quickstart guide with Digital Passport 1x Installation manual 1x Small parts
EAN	4260423860742
Warranty	see www.doorbird.com/warranty

CURRENT SYSTEM REQUIREMENTS

	Mobile device: Newest iOS on iPhone/iPad, newest Android on Smartphone/Tablet
System requirements	Internet: High-Speed Landline Broadband Internet connection, DSL, cable or fiber optic, no socks or proxy server Network: Ethernet Network, with DHCP
Recommended installation height	Camera lens should be at a min. height of 125 cm (49 in)
www.doorbird.com	

VIDEO

Camera	HDTV 720p, dynamic (VGA - HDTV)
Lens	High-end ultra wide-angle hemispheric lens 180° horizontal, 90° vertical, straightened, IR-capable
Night-vision	Yes, light sensor, automatic IR-cut filter, 12 IR-LEDs (850 nm)

AUDIO

Audio components	Speaker and microphone, echo and noise cancellation (AEC, ANR)
Audio streaming	Two-way, full duplex

NETWORK

Ethernet	RJ45 jack, PoE 802.3af Mode-A
----------	-------------------------------

MOTION SENSOR

Type	Active
Detection angle	110°
Range	1 - 10 m (3.3 - 32.9 ft), depends on environment, configurable in 1 m (3.3 ft) steps.
Technology	4D. Based on multiple integrated sensors and algorithms, e.g. Radio Frequency Energy (RFE)
Configuration	Via App, e.g. <ul style="list-style-type: none"> • Range (1.10 m / 3.3 - 32.9 ft) • Movement direction (coming, leaving, both) • Individual events (e.g. switch a relay, push notification, SIP call [audio/video], HTTP(s) notification) • Individual schedules

RFID

Type	Active Reader Passive Tag (ARPT) system
Standard	ISO/IEC 18000-2:2009 Part 2, EM4100, EM4102
Frequency	125 KHz
Range	0 - 3 cm, depends on environment
Antenna	Internal
Compatible Transponder	RFID key fobs, sold separately, see www.doorbird.com/buy
	Up to 100 tags manageable
Configuration	Via app, e.g. <ul style="list-style-type: none"> • Tag (add, delete) • Individual events (e.g. switch a relay, push notification, SIP call [audio/video], HTTP(s) notification) • Individual schedules

INTEGRATED WIRELESS MODULES

RFID	125 KHz
Sensor	24 GHz, can be disabled

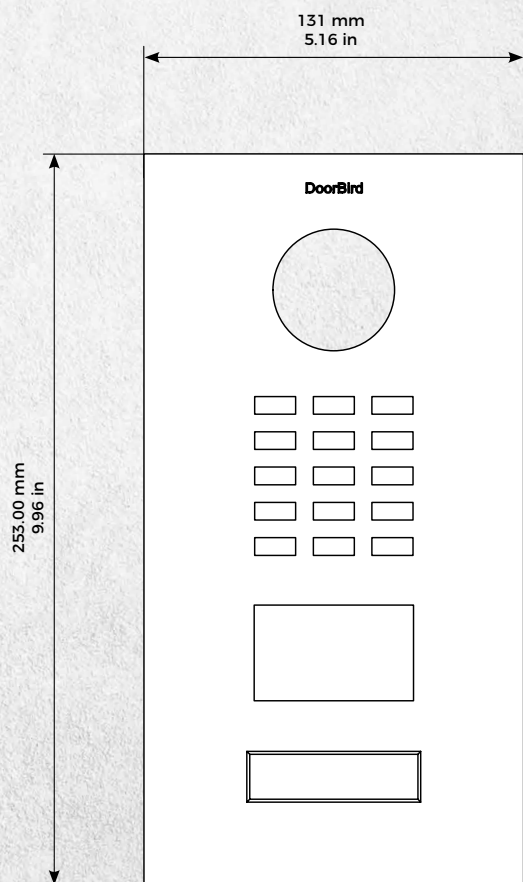
OPTIONAL ACCESSORIES

Sold separately	see www.doorbird.com/buy
-----------------	--

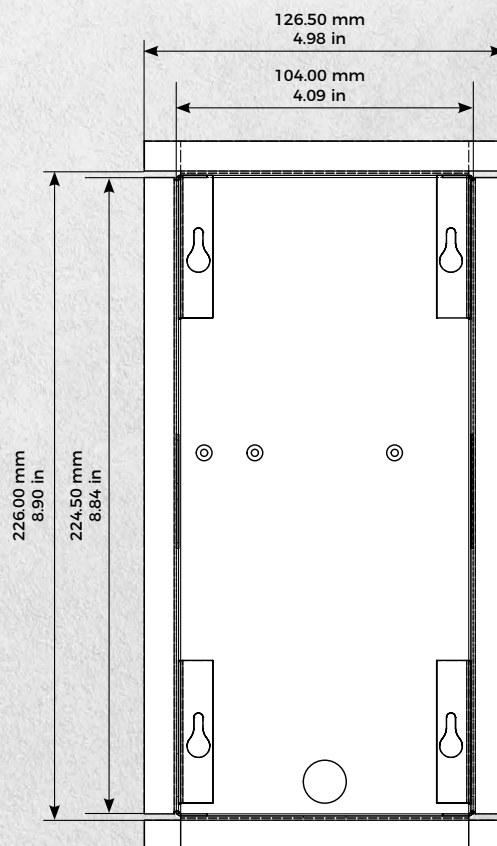
Special remarks:
Assembly requires professional skills or a technician.



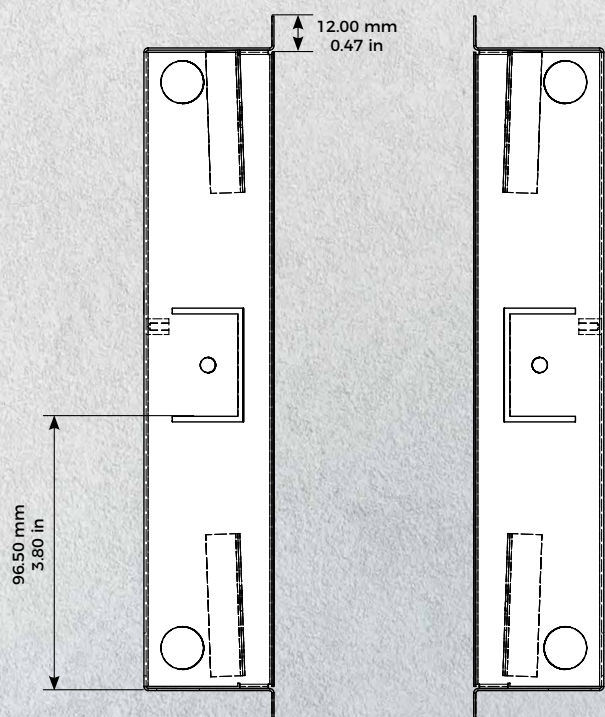
Front panel material thickness: 3.0 mm (0.12 in)



Front panel

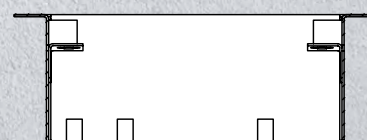
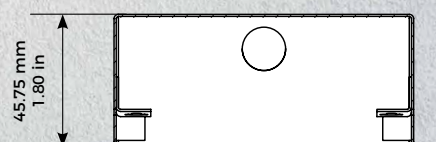


Mounting housing



Mounting housing

Mounting housing



Mounting housing